

## The Ancestry of Nancy Graham, wife of Chauncey Loveland, born 1797 in the Western Reserve of Connecticut: A DNA Study

By Richard L. Tolman, Ph. D.

### PART 1

This essay was motivated by the recent availability of **at-DNA** data and the morass of unsubstantiated data surrounding the author's ggg grandmother **Nancy Graham**. She was probably born in 1797<sup>1</sup> at Madison (Ohio) in the Western Reserve of Connecticut (now Lake County, Ohio) and died<sup>2</sup> at Carthage, Hancock, Illinois on 20 Sep 1845.

The town of Madison became in 1800 part of Trumbull County, Ohio, then in 1806 part of the newly-created Geauga County. This town and other Lake Erie communities were then in 1840 split off to form Lake County, Ohio—county seat Painesville. See Figure 1.

Nancy married<sup>3</sup> **Chauncey Loveland** 15 Dec 1814 at Madison, then Geauga County, Ohio. He was born 1797(5)<sup>4</sup> at Glastonbury, Hartford, Connecticut and came with his parents, Levi and Esther (Hill) Loveland to farm the Western Reserve near Madison in 1803.<sup>5</sup> His father



Figure 1. Lake County, Ohio

<sup>1</sup> No real source—listed by FamilySearch as 1 Aug 1797, Madison, Geauga, Ohio; perhaps calculated from the marriage record since the place is the same for both marriage and birth (although incorrect for birth—Gauga county was created in 1806). **Loveland and Loveland, Vol. III** have her birth in 1796.

<sup>2</sup> Loveland, J. B. and George Loveland, *Genealogy of the Loveland Family* (Fremont, OH: I. M. Keeler & sons, 1892) #296, p. 198; hereafter **Loveland and Loveland, Vol. III**.

<sup>3</sup> Loveland/Graham marriage: Ohio, Geauga County marriages, 1789-2013; *FamilySearch* <https://familysearch.org/ark:/61903/1:1:Q21Q-26JQ>; FHL Film 873461, Franklin County Genealogical & Historical Society.

<sup>4</sup> FamilySearch Family Tree, 'Life Sketch' for Chauncey Loveland, lots of words—few sources; hereafter **Life Sketch of Chauncey Loveland**; gravestone says birth in 'Oct 1795', but 1860 census says 'age 63' and *LDS Biographical Encyclopedia* states 'death at 79' in Aug 1876.

<sup>5</sup> **Loveland and Loveland, Vol. III** #296, pp. 198-199.

Levi may have been buried<sup>6</sup> in Eastbury, Hartford, Connecticut where some of his children and a brother are buried (Joel, 1794; Elijah, 1794; brother Pelatiah, 1823). Levi has tax records in Ohio and his wife Esther Loveland filed for Revolutionary War Pension Payments<sup>7</sup> (he was a teamster) in Cleveland, Cuyahoga County 4 Mar 1831 (his death in 1830), and was paid until her death 16 Jul 1847 at Amherst, Lorain, Ohio.

Nancy Loveland appears in the Ohio tax records<sup>8</sup> for 1832 to 1838 in Weathersfield Twp, Trumbull County (the Loveland farm was in Cuyahoga County, Ohio). Since the tax records are in her name and not her husband Chauncey's, this may mean she inherited the property from her father and there were no other sibs eligible for inheritance (hence her father must have died 1831-1832). She raised her children in Ohio—first in Geauga County and then for abt five years in Lorain County with her father-in-law Levi;<sup>9,10</sup> then abt 1839 moved to farm in Carthage, Hancock County, Illinois (she died there in 1845).<sup>11</sup> Her Ohio farm in Trumbull/Gauga/Lake County was disposed of after her death (for \$400) 21 Mar 1848.<sup>12</sup> Notice of the sale of her property was published<sup>13</sup> in the *The Daily Sanduskian* (November 1, 1849). Chauncey and his father Levi also appear in the tax records of Madison in the time period 1820-1836.<sup>14</sup>

Chauncey and Nancy Loveland were friendly toward the Mormons, but Nancy never joined them. Their sons Levi and Chester joined the Mormons in 1837,<sup>15</sup> but Chauncey only

---

<sup>6</sup> Findagrave #11610726; a Levi Loveland was buried in the Old Eastbury Cemetery in Glastonbury—died 19 Nov 1830 (age 81). **Loveland and Loveland III** contend this is the Ohio Levi although they point out there was another Levi Loveland from Connecticut in the Revolutionary War.

<sup>7</sup> United States Revolutionary War Pension Payment Ledgers, 1818-1872, *FamilySearch* <https://familysearch.org/ark:/61903/1:1:Q24Q-K1F5>; FHL Film 1319396.

<sup>8</sup> Ohio, Tax Records 1800-1850—seven separate citations during the time period, all in Weathersfield Twp; online at Ancestry (accessed 17 Jan 2020).

<sup>9</sup> **Life Sketch of Chauncey Loveland**. The family is stated to have lived in Lorain County, Ohio for 5 years.

<sup>10</sup> 1840 U. S. Census of Amherst, Lorain, Ohio, online at *FamilySearch* <https://familysearch.org/ark:/61903/1:1:XHYV-19L>, head of family: Levi Loveland.

<sup>11</sup> **Loveland and Loveland, Vol. III**, #296, pp. 198-199; there is no clue as to where they got this information.

<sup>12</sup> Ohio, Wills and Probate Records 1786-1998, Erie County, Ohio, Bonds Vol A-B, 1838-1858, pp 127-8 ; online at Ancestry (accessed 17 Jan 2020).

<sup>13</sup> *The Daily Sanduskian*, November 1, 1849; online at Ancestry (accessed 17 Jan 2020).

<sup>14</sup> Ohio Tax Records, 1800-1850, online at FamilySearch <https://familysearch.org/ark:/61903/1:1:Q2RL-F85H>; indexed by the Ohio Genealogical Society, FHL Film 4848006.

<sup>15</sup> **Life Sketch of Chauncey Loveland**.

became<sup>16</sup> a Mormon in 1846 after Nancy's death and his remarriage in spring 1846 to a Mormon. He was part of the Brigham Young Vanguard Company in July 1847 that left to investigate the Salt Lake Valley.<sup>17</sup>

## at-DNA

**RULE 1: DNA** can only be inherited from individuals who are on the direct line, not on a collateral line.

**RULE 2:** Absence of evidence is evidence, but not proof of absence.

**RULE 3:** The frequency of useful shared matches decreases going back generations.

**RULE 4:** There may be many matches that contain pieces of ancient DNA, but these are only useful if a pedigree connection to the ancient line has been proven.

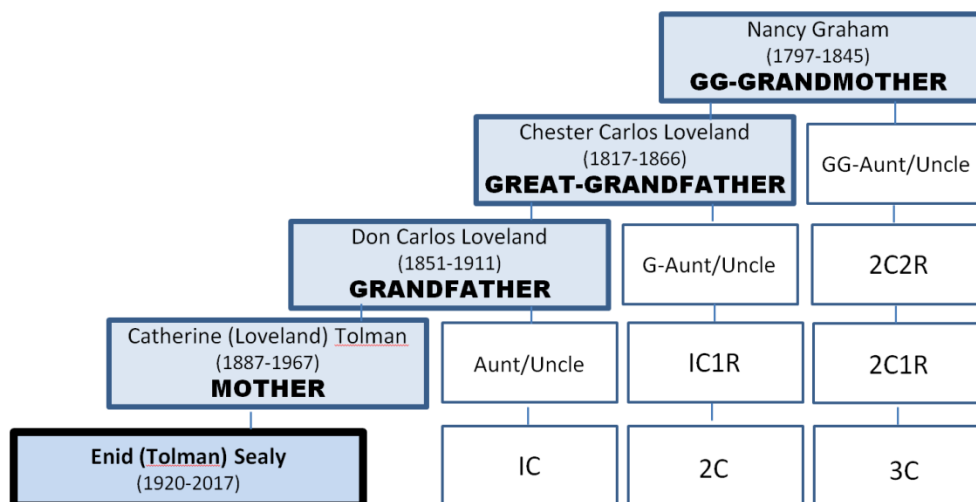


Figure 2. The Descendency of Enid (Tolman) Sealy (hereafter **ETS**) from Nancy Graham. She possesses in her genome the largest known<sup>18</sup> inheritance of Nancy Graham DNA (a 4<sup>th</sup> generation ancestor). This descendency is confirmed by *hundreds* of DNA matches as well as strongly-supporting historical records; not shown.

<sup>16</sup> Chauncey Loveland, *Utah, Latter-Day Saint Biographical Encyclopedia*; online at FamilySearch <https://familysearch.org/ark:/61903/1:1:WGF1-31T2>.

<sup>17</sup> 'Mormon Pioneers', Vanguard company of 1847, online at Wikipedia.org.

<sup>18</sup> 'Known' = the Ancestry-DNA collection.

## ETS' Common Ancestor Loveland Matches to 9cM

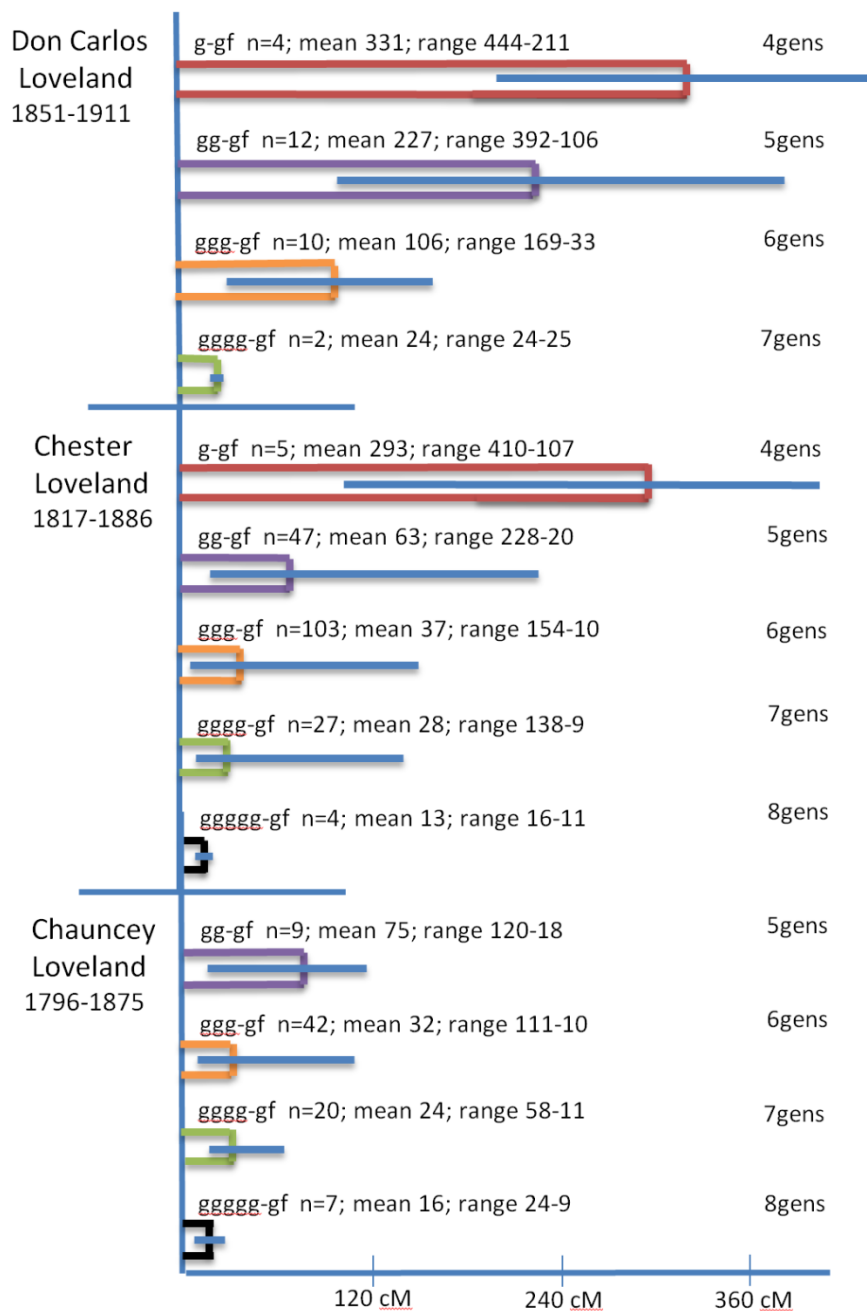


Figure 3. Analysis of Loveland Common Ancestors of ETS.

Above is shown an analysis of the Loveland CAs (Figure 3, n=number of matches). Note that the individual match cM (centimorgan) value is highly variable and is poorly predictive of the CA generation. However an average of the cMs of multiple matches can be used to predict with some accuracy the CA (common ancestor) generation, the generation of connection.

The Loveland lineage is confirmed by **at-DNA** (Common Ancestors, hereafter CA) back to Thomas Loveland (1641-1716, m. **Charity Hart**) of Wethersfield, Hartford, Connecticut; data not shown. ...Not so, the Graham lineage, discussed later.

The Loveland/Loveman family were early settlers of Wethersfield, the oldest town in Connecticut (founded 1634). The Graham family were early settlers of nearby Hartford (founded 1636). It is ironic that Chauncey Loveland (gg-gson of Thomas Loveland should marry Nancy Graham (gg-gdau of Henry Graham).

### The Sanderson/Stevens Hoax.

It is commonly believed<sup>19</sup> that Nancy's parents were **Samuel Graham** and wife **Nancy Stevens** of Ohio or **James/Joseph Graham** (b. 18 Dec 1769 of Madison in the Western Reserve<sup>20</sup>) and wife **Nancy Sanderson** (b. abt 1771, m. 1829 at Franklin Co., Kentucky).<sup>21</sup> This is not true; there are no historical records establishing a link between the Nancy Graham, who married Chauncey Loveland, and these potential parents.

Additionally, there are no **ETS**, RLT, or GLT **at-DNA** matches to Stevens surnames {Nancy Stevens (1761-1845) or her father Benjamin Stevens (1734-1810) of Dutchess Co., New York} or to Sanders/Sanderson surnames {Nancy Sanders (md. James Graham in 1829) of Franklin Co. Kentucky). There are also no obvious links to a Stevens line or Sanderson line in a search for relevant matches. This is supporting evidence for the absence of a Stevens/Sanders relationship.

**ETS** is Enid (Tolman) Sealy, paternal aunt of RLT (author, ggg-gson of Nancy Graham) and GLT (brother of author).

There is also the matter of whether this even makes any sense. The Nancy Graham birthplace in the Western Reserve of Connecticut was accessible at that time (1796-7) only by travel on Lake Erie from Fort Niagara, New York. Settlements in what became Butler County, Ohio (or Kentucky) for that matter were accessed by travelling downstream on the Ohio River from Pittsburgh, Pennsylvania. Travel from these Ohio river places to Trumbull County was not only unthinkable but also practically un-doable there being Indians, Indian trails and impassible wilderness in central Ohio in the way in 1796.

---

<sup>19</sup> Cf. FamilySearch Family Tree, My Heritage, and various Trees on Ancestry.

<sup>20</sup> 1769 is early to be born in the Western Reserve; there was only significant settlement after the Revolutionary War; for example, Cleveland was first settled in 1796 (Wikipedia).

<sup>21</sup> Graham/Sanderson marriage: U. S. and International Marriage Records, he b. 1769, she b. 1771; online at Ancestry (accessed 17 Jan 2020)

## Parentage of Nancy (Graham) Loveland

There was no census in 1790<sup>22</sup> in the Western Reserve (Northern Territories) and the only Graham in the 1800 and 1810 census (tax records) was Elisha Graham in Trumbull then Geauga County, Paynesville Township, who established his home there in 1799.<sup>23</sup> Similarly, FamilySearch Family Tree has Nancy's father as Samuel (b. 1771, Wethersfield, Connecticut), married Sally Coltrin, (see Millennium File), or Nancy Stevens (b. 1761). No sources confirm the father-dau relationship.

Examination of **at-DNA** matches revealed Cluster 1, the closest relatives of Nancy Graham (from cMs). These are 'clorang'<sup>24</sup>, 'Erin Arnold'<sup>25</sup>, and 'B. K.'<sup>26</sup> (see Cluster 1)—all descendants of Napoleon Bonaparte Graham, born 21 Jan 1825 at Painesville, Lake, Ohio. He is therefore a 1C1R of Nancy Graham—his father John Chauncey Graham was Nancy Graham's brother. The CA is Nancy's and John Chauncey's father Samuel Graham (1771-1832) of Wethersfield, Hartford, Connecticut. This is confirmed by matches to descendants of Samuel's other children *vide infra*.

CLUSTER 1		single segments except those noted; 2 segments bold		
DNA	Match Shared Matches	cM	Descendant of	Common Ancestor 5C
GLT/RLT	clorang	36,35	Napoleon B. Graham	Samuel Graham (1771-1832)
	Erin Arnold	25,18	Napoleon B. Graham	Samuel Graham (1771-1832)
	Roxcee Kountz	50, <b>43</b>	Napoleon B. Graham	Samuel Graham (1771-1832)
	Jacqueline Lewis	33, <b>39</b>	Napoleon B. Graham	Samuel Graham (1771-1832)
	B. K.	20,18	Napoleon B. Graham	Samuel Graham (1771-1832)

It is likely that Nancy's forebears came from Connecticut and were veterans of the Revolutionary War as these were the usual recipients of Western Reserve land grants. Nancy

<sup>22</sup> Thorndale, William and William Dollarhide Map Guide to the U. S. Federal Censuses 1790-1920 (Baltimore, MD: Genealogical Publishing Co., 1987).

<sup>23</sup> Upton, Harriet Taylor and Harry Gardner Cutler *History of the Western Reserve*, Vol 1 (Chicago, IL: Lewis Publishing Co., 1910), p. 298.

<sup>24</sup> Online at [www.ancestry.com/family-tree/person/tree/26707585](http://www.ancestry.com/family-tree/person/tree/26707585) 'Carr/Tunncliff Family Tree' owner: clorang; (accessed 13 Jan 2020); hereafter **Carr/Tunncliff Tree**.

<sup>25</sup> Online at [www.ancestry.com/family-tree/person/tree/83131104](http://www.ancestry.com/family-tree/person/tree/83131104) 'Erin Arnold Family Tree' owner: Erin Arnold; (accessed 13 Jan 2020).

<sup>26</sup> Online at [www.ancestry.com/family-tree/person/tree/119535802](http://www.ancestry.com/family-tree/person/tree/119535802) 'Charles Alois Arnold Family Tree' owner: Thomas359Barbara; (accessed 13 Jan 2020); hereafter **Charles Alois Arnold Tree**.

cannot have been a sib of Napoleon (26 year age difference) or a dau of John Chauncey Graham (b. 1787).

Graham is unfortunately a common name in colonial America—26 Grahams have Revolutionary War Pension Records—3 or 4 of them from Connecticut. There were multiple Grahams who immigrated to America from Scotland or Northern Ireland. A genealogist must be very careful in deducing intergenerational relationships as we will see.

A Michigan mugbook<sup>27</sup> contains a biography of Napoleon B. Graham, a son of John and Chloe (Graham) Graham who was born in 1825, a native of Painesville, Ohio. It further states that his grandfather Samuel, ‘a Scotchman by birth,’ fought in the Revolutionary War and afterward settled in the Ohio woods near the town of Painesville. Grandfather Samuel’s children are named: Solomon, John, Betsey, Samuel and Sarah.

Napoleon’s grandfather (Samuel) left Ohio in 1825 to farm in Erie County, New York and left there for Michigan in 1831. At the end of his life he moved to Parma Township, Jackson, Michigan and died there at almost age 97 preceded by his wife who died at 95 years. Samuel’s son John and his wife Chloe’s children are named by the **at-DNA** donor’s tree.<sup>28</sup> Nancy then would have stayed with the Ohio farm with her husband while her parents moved on to Erie County, New York. This is consistent with the **at-DNA** data as well as the historical record; and there are also five RLT/GLT matches to members of this family that support this assignment.

Reiterating then, the N. B. Graham Jackson County biography<sup>29</sup> states that Napoleon B.’s father was John Chauncey Graham (1787-1848) and that his grandfather was Samuel Graham, an ‘immigrant from Scotland’ (disproven by **at-DNA** *vide infra*) who fought<sup>30</sup> in the American War for Independence. Furthermore, the grandfather is said to have settled near Painesville in northern Ohio after the war and then to have moved ultimately to Parma Township, Jackson, Michigan where he died at nearly age 96; this would be about the year 1867. His wife preceded him shortly in death at age 95. If this is correct, why are there are no records of his burial in Jackson County, Michigan? The earliest burial in the Graham Cemetery in Parma is 1844 (Chloe

---

<sup>27</sup> ‘Napoleon B. Graham of Parma Township’ *Portrait and Biographical Album of Jackson County, Michigan* (Chicago, IL: Chapman Bros. 1890) pp. 529-30, hereafter **NB Graham Biography**.

<sup>28</sup> **Carr/Tunnidcliff Tree**.

<sup>29</sup> **NB Graham Biography**.

<sup>30</sup> Saml Graham, Military Service Feb 1778, New Jersey, Revolutionary War Rolls, 1775-1783, there are a number of other Grahams who fought in the war, but no other Sam’l Graham; online at Ancestry (accessed 17 Jan 2020).

Graham, John's wife). It is reasonable assumption that if he died after 1844, he would have been buried in the Graham Cemetery or at least in Parma. This makes us question the mugbook report of his death in 1867. The DNA data and independent historical records confirm him to be the Connecticut-born Samuel Graham born in 1771.

Samuel had other children for whom an **at-DNA** link has been demonstrated. Matches and shared matches to Samuel's dau Rebecca (Graham) Woodworth are shown in Cluster 2 ('S. E.'<sup>31</sup> and 'L. E.'<sup>32</sup>), to dau Elizabeth (Graham) Estelle in Cluster 3 ('mkatnix'<sup>33</sup>, 'amprime1'<sup>34</sup>, 'dawnkoenig1'<sup>35</sup>, and 'lamac1141'<sup>36</sup>) and to son Solomon Graham in Cluster 4 ('KMJohnson64'<sup>37</sup> and 'Marsha Geister'<sup>38,39</sup>).

CLUSTER 2		single segments except those noted; 2 segments bold		
DNA	Match Shared Matches	cM	Descendant of	Common Ancestor 5C
GLT	S. E.	<b>20</b>	Rebecca G Woodworth	Samuel Graham (1771-1832)
	L. E.	9	Rebecca G Woodworth	Samuel Graham (1771-1832)

RLT and **ETS** also had 'S. E.' matches (19, 20 cM).

<sup>31</sup> Online at [www.ancestry.com/family-tree/person/tree/61691406](http://www.ancestry.com/family-tree/person/tree/61691406) 'Nelson Family Tree' owner: treeclimber220486; (accessed 13 Jan 2020).

<sup>32</sup> Online at [www.ancestry.com/family-tree/person/tree/61691406](http://www.ancestry.com/family-tree/person/tree/61691406) 'Nelson Family Tree' owner: treeclimber220486; (accessed 13 Jan 2020).

<sup>33</sup> Online at [www.ancestry.com/family-tree/person/tree/29302498](http://www.ancestry.com/family-tree/person/tree/29302498) 'Nix-Chubb-Chauret Family Tree' owner: mkatnix; (accessed 13 Jan 2020).

<sup>34</sup> Online at [www.ancestry.com/family-tree/person/tree/3705602](http://www.ancestry.com/family-tree/person/tree/3705602) 'Smith Family Tree' owner: amprime1; (accessed 13 Jan 2020).

<sup>35</sup> Online at [www.ancestry.com/family-tree/person/tree/12026171](http://www.ancestry.com/family-tree/person/tree/12026171) 'DL Koenig Family Tree' owner: dawnlkoenig1; (accessed 13 Jan 2020).

<sup>36</sup> Online at [www.ancestry.com/family-tree/person/tree/862298354](http://www.ancestry.com/family-tree/person/tree/862298354) 'McCutcheon Family Tree' owner: cjmac146; (accessed 13 Jan 2020).

<sup>37</sup> Online at [www.ancestry.com/family-tree/person/tree/100027573](http://www.ancestry.com/family-tree/person/tree/100027573) 'Graham Family Tree' owner: KMJohnson64; (accessed 13 Jan 2020).

<sup>38</sup> Online at [www.ancestry.com/family-tree/person/tree/111374418](http://www.ancestry.com/family-tree/person/tree/111374418) 'Graham Family Tree' owner: Marsha Geister; (accessed 13 Jan 2020).

<sup>39</sup> Geo Washington Graham is a son of Solomon, cf. [www.ancestry.com/family-tree/person/tree/118782638](http://www.ancestry.com/family-tree/person/tree/118782638) 'Graham Family Tree' owner: Mara Johannes and references therein; (accessed 13 Jan 2020).

CLUSTER 3			single segments except those noted; 2 segments bold		
DNA	Match	Shared Matches	cM	Descendant of	Common Ancestor 4C
ETS	mkatnix		9	Elizabeth G Estelle	Samuel Graham (1771-1832)
	amprime1		11	Elizabeth G Estelle	Samuel Graham (1771-1832)
	dawnkoenig1		<b>24</b>	Elizabeth G Estelle	Samuel Graham (1771-1832)
	lamac1141		20	Elizabeth G Estelle	Samuel Graham (1771-1832)

CLUSTER 4			single segments except those noted; 2 segments bold		
DNA	Match	Shared Matches	cM	Descendant of	Common Ancestor 4C
ETS	KMJohnson64		<b>28</b>	Solomon Graham	Samuel Graham (1771-1832)
	Marsha Geister		<b>54</b>	Geo Washington Graham	Samuel Graham (1771-1832)

More about the ancestry of Samuel Graham (1771-1832) and his wife is presented in **Part 2** with the available **at-DNA** data.

## Graham Genealogical Summary (truncated, beginning 1771; Gens 1-4 cf. Part 2)

### Generation Five

1. **Samuel Graham** (**John**<sup>4</sup> **Samuel**<sup>3</sup> **Benjamin**<sup>2</sup> **Henry**<sup>1</sup>) born<sup>40,41</sup> 1771 at Wethersfield, Hartford, Connecticut and died 1832<sup>42</sup> in Geauga County, Ohio. He married a Coltrin, probably **Hannah Coltrin**<sup>43</sup> (see Part 2). She was born abt 1766 at Plympton, Plymouth, Massachusetts and died abt 1834. She married abt 1789 at Wethersfield, Hartford, Connecticut **Samuel Graham**. They lived in Massachusetts and New York in their early married life. They left to farm in the Western Reserve abt 1795.

<sup>40</sup> Connecticut Births and Christenings, *FamilySearch* <https://familysearch.org/ark:/61903/1:1:F74J-NBD>; Samuel Graham, Wethersfield.

<sup>41</sup> Hinman, R. R. 'Records of Wethersfield, Connecticut' *New England Historical and Genealogical Register*, Vol 15, July 1861, p. 241.


<sup>42</sup> See Note 5 and earlier discussion.

<sup>43</sup> Samuel Graham, Millenium File, son of John and Hannah (Hunn) Graham, md Sally Coltrin; *Ancestry* <http://search.ancestry.com/cgi-bin/sse.dll?dbid=7249&h=10383457&indiv=try>.


Samuel and Hannah (Coltrin) Graham had at least six children.<sup>44</sup>

- + 2 i. **JOHN CHAUNCEY GRAHAM** was born 1787 at Ohio (or Connecticut or Massachusetts) and died 22 Nov 1848 at Parma, Jackson, Michigan; buried at Graham Cemetery, Parma, Jackson, Michigan.


 **{at-DNA: there a descendant<sup>45</sup> of Asaph Graham (son of John Chauncey Graham) who shares DNA (17 cM) with ETS}.**

 **{at-DNA: there are three descendants<sup>46</sup> of Napoleon B. Graham (son of John Chauncey Graham) who share DNA (35 and 36 cM, 18 and 25 cM, 18 and 10 cM) with two ggg-gsons of Nancy Graham}.**

- 3 ii. **ELISABETH/BETSEY GRAHAM** was born 19 Sep 1788 at New York and died 13 Apr 1876 (age 87) at Brookfield, Eaton, Michigan; buried<sup>47</sup> at Perry Cemetery, Charlotte, Eaton, Michigan. She married abt 1807 **Thomas Estelle**.<sup>48</sup> Five children: Orlando b. 1808, Sarah b. 1817, John Graham b. 1821, Isaac Ambrose b. 1823<sup>49</sup>, Albert b. 1829.

 **{at-DNA: there are three descendants<sup>50</sup> of Elizabeth (Graham) Estelle who share DNA (24, 20, and 11 cM) with ETS, a gg gdau of Nancy Graham}.**

- + 4 iii. **SAMUEL GRAHAM, Jr.** was born 1791 at Massachusetts. He married **Esther Loveland**, dau of Levi and Esther (Hills) Loveland.

 **{at-DNA: there are two descendants<sup>51</sup> of Rebecca (Graham) Woodworth (dau of Samuel Graham) who share DNA (19, 20 and 10 cM) with ETS, RLT, and GLT}.**

- 5 iv. **SARAH GRAHAM** was born abt 1790 and may have died<sup>52</sup> 4 Jun 1822 at Connecticut.

---

<sup>44</sup> **NB Graham biography**; sibs named, children of Samuel.

<sup>45</sup> **at-DNA:** 'M.H.' {a descendant of Asaph Graham, **20**}

<sup>46</sup> **at-DNA:** 'clorang', 'Erin Arnold', and 'B.K.' {all descendants of Napoleon Bonaparte Graham, **24**}.

<sup>47</sup> Findagrave #87162259.

<sup>48</sup> John Graham Estelle death: Michigan Deaths and Burials, *FamilySearch* <https://familysearch.org/ark:/61903/1:1:FHXL-77E>; parents Elizabeth Graham and Thomas Estelle.

<sup>49</sup> 1860 U. S. Census of Amherst, Lorain, Ohio, Roll M653\_1002, Page 329, FHL Film 805002, Elizabeth (age 72) is living with son Ambrose, online at FamilySearch (accessed 16 Jan 2020).

<sup>50</sup> **at-DNA:** 'dawnkoenig1', 'lamac1141', and 'amprine1' {descendants of Elizabeth (Graham) Estelle}.

<sup>51</sup> **at-DNA:** 'S.E.' and 'L.E.' {both descendants of Rebecca (Graham) Woodworth}

<sup>52</sup> Connecticut Deaths and Burials 1772-1934 FHL Film 3132, *FamilySearch* <https://familysearch.org/ark:/61903/1:1:F78C-XPP>.

- + 6 v. **NANCY GRAHAM** was born 1797 at Madison, in the Connecticut Western Reserve (Ohio). She married **Chauncey Loveland**, son of Levi and Esther (Hills) Loveland.
- + 7 vi. **SOLOMON GRAHAM** was born abt 1798 at Geauga County, Ohio. He married 29 Mar 1821 at Geauga County, Ohio **Aurilla Beebe**.



{at-DNA: there are two descendants<sup>53</sup> of George Washington Graham (son of Solomon Graham) who share DNA (28 and 54 cM) with ETS, a gg gdau of Nancy Graham}.

### Generation Six

{5<sup>th</sup> Generation from ETS}

2. **John Chauncey Graham (Samuel<sup>5</sup> John<sup>4</sup> Samuel<sup>3</sup> Benjamin<sup>2</sup> Henry<sup>1</sup>)** was born 1787 at Ohio and died 22 Nov 1848 (age 61) at Parma, Jackson, Michigan and was buried at the Graham Cemetery (also called Perry Cemetery) at Parma, Jackson, Michigan<sup>54</sup>. He married (1) abt 1808 at Ohio **Chloe ('Clowah') Graham**; she was born 1790 of Ohio and died 14 Oct 1844 (age 54) also buried<sup>55</sup> in the Graham Cemetery in Parma. He was a veteran of the War of 1812. He married (2) aft 1844 **Prudence \_\_\_\_**. They had most of their children in Geauga County, Ohio but about 1820 went to New York for a few years and then in 1832 moved to Parma, Jackson, Michigan.

John and Chloe (Graham) Graham had eight children.<sup>56,57</sup>

- 8 i. **LORENZO GRAHAM** was born 1809 in Ohio and died 20 Nov 1848 (age 38-9) at Parma, Jackson, Michigan, buried<sup>58</sup> in the Graham Cemetery in Parma. He married **Sarah Lewis**; she was born 1818 and died 1880. Six children: John b. 1835, Porter Lorenzo, b. 1840, Joseph b. 1841, Peter b. 1843, Harriett b. 1848, Chloe Marian b. 1849.<sup>59</sup>

---

<sup>53</sup> at-DNA: 'KMJohnson64' and 'Marsha Geister' {descendants of Solomon Graham }.

<sup>54</sup> Findagrave #10289292; with good biography from *History of Jackson County, op cit*.

<sup>55</sup> Findagrave #10290045.

<sup>56</sup> **NB Graham biography.**

<sup>57</sup> **Charles Alois Arnold Tree.**

<sup>58</sup> Findagrave #10290070.

<sup>59</sup> FamilySearch Family Tree and sources cited therein.

- 9 ii. **MARY GRAHAM** was born 1813 at Ohio; she was buried<sup>60</sup> at the Graham Cemetery in Parma, Jackson, Michigan. She married **Samuel Hicks**; he was born 1799. One son Lodema b. 1829.
- 10 iii. **ASAPH GRAHAM** was born 7 Aug 1814 at New York and died 10 Sep 1874 (age 60) at Wisconsin; buried<sup>61</sup> at Big River Presbyterian Cemetery, Trimbelle, Pierce, Wisconsin. He married<sup>62</sup> 27 Jan 1839 **Lorinda Lovewell** at Parma, Jackson, Michigan.<sup>63</sup> Lorinda (Belinda), dau of Henry and Polly (Houseman) Lovewell was born 1818 at New York and died 1901. Six children: Harris b. 1841, Arthur Montieth b. 1842, Wm Wallace b. 1845, Mariam Gertrude b. 1848, Fred Henry b. 1855, John Asaph b. 1858.
- 11 iv. **PORTER L. GRAHAM** was born 1817 at Ohio and died 18 Jul 1839 (age 22) at Michigan; buried<sup>64</sup> at the Graham Cemetery at Parma, Jackson, Michigan. Never married.
- 12 v. **SAMUEL GRAHAM** was born 1820 at Painesville, Geauga, Ohio and died 19 Jan 1863; buried<sup>65</sup> at Graham Cemetery, Parma, Jackson, Michigan. He served in the 9<sup>th</sup> Michigan infantry. He married<sup>66</sup> (1) 4 Jul 1841 at Jackson County, Michigan **Leah V. Barttersen**. She was born 1824 and presumably died abt 1853. Four children: Burgin/Brigham b. 1845, Mary b. 1849, Dow L. b. 1851, Josephine b. 1854.<sup>67</sup>
- Samuel married<sup>68</sup> (2) 17 Sep 1856 at Parma, Jackson, Michigan **Sarah M. Thurston**; she was born 1832 and died 1911. Two children: Samuel b. 1857, and Agnes b. 1859.<sup>69,70,71</sup>

---

<sup>60</sup> Findagrave #120218111.

<sup>61</sup> Findagrave #115804155.

<sup>62</sup> Graham/'Lovwell' marriage: Michigan, Jackson County marriages, 1820-1940; *FamilySearch* <https://familysearch.org/ark:/61903/1:1:FCR5-9Q5> ; FHL Film 941,632.

<sup>63</sup> 1850 U. S. Census of Parma, Jackson, Michigan, Roll M432\_352, Page 270B, Image 295; Asaph and Belinda and three children plus Asaph's brother Andrew, age 21; online at Ancestry (accessed 16 Jan 2020).

<sup>64</sup> Findagrave #10290081.

<sup>65</sup> Findagrave #10290074.

<sup>66</sup> Graham/Barttersen marriage: Michigan, Jackson County records 1822-1940, <https://familysearch.org/ark:/61903/1:1:VN2L-NQL>; FHL Film 941632.

<sup>67</sup> FamilySearch Family Tree and sources cited therein.

<sup>68</sup> Graham/Thurston marriage: Michigan, Jackson County records 1822-1940, <https://familysearch.org/ark:/61903/3:1:939V-KHH5-Y>.

<sup>69</sup> Online at [www.ancestry.com/family-tree/person/67813489](http://www.ancestry.com/family-tree/person/67813489) 'Tuckey Family Tree' owner: pahiggins3; (accessed 16 Jan 2020).

- 13 vi. **SOPHRONIA GRAHAM** was born 1822 at New York and died 10 Aug 1849 at Parma, Jackson, Michigan; buried<sup>72</sup> at Graham Cemetery, Parma. She married<sup>73</sup> 16 Mar 1843 at Jackson County, Michigan **Oliver William Perry** son of James and Fannie (Avery) Perry. He was born 1815 and died 1888. Three children: Daniel M. b. 1844, Mary E. b. 1846, Oliver Hazard b. 1848.
- 14 vii. **NAPOLEON BONAPARTE GRAHAM** was born 21 Jan 1825 of Painesville, Geauga (now Lake), Ohio and died 1890, age 64; buried<sup>74</sup> in the Graham Cemetery at Parma, Michigan. In 1832 the family moved to farm in Erie County, Ohio and in Sep 1832 to Jackson County, Michigan. He married 5 Dec 1847 at Parma, Jackson, Michigan **Mary Jane Pierce**, dau of James and Ann (Wolcott Loomis) Pierce. She was born 22 Mar 1831 at Lockport, Niagara, New York and died 19 May 1879 at Parma, Jackson, Michigan; buried next to her husband in the Graham Cemetery. Nine children: Samuel B. b. 1848, Asaph J. b. 1851, Ellen Mar b. 1855, Benjamin Franklin b. 1856, Elsie Ann b. 1857, Fidus b. 1864, Wm Lenain b. 1866, Mary Jane b. 1868, Lottie A. b. 1873.<sup>75</sup>
- 15 viii. **ANDREW GRAHAM** was born 1830 at New York<sup>76</sup> and died 10 May 1865 at Parma, Jackson, Michigan; buried<sup>77</sup> at the Graham Cemetery in Parma. He married **Anna Perry**; they had a dau Minnie, born 1859.
4. **Samuel Graham, Jr. (Samuel<sup>5</sup> John<sup>4</sup> Samuel<sup>3</sup> Benjamin<sup>2</sup> Henry<sup>1</sup>)** was born 1791 at Massachusetts<sup>78</sup> and died before 1870<sup>79</sup> at Cleveland, Cuyahoga, Ohio. He married 2 Sep 1816

---

<sup>70</sup> 1850 U. S. Census of Michilimackinac, Michilemackinac, Michigan, <https://familysearch.org/ark:/61903/1:1:MF8K-4J9>; FHL Film 443573, Samuel and Leah and two children.

<sup>71</sup> 1860 U. S. Census of Jackson City, Jackson, Michigan, <https://familysearch.org/ark:/61903/1:1:MWDP-GPH>; FHL Film 803547, Samuel and six children with Sarah, born 1832.

<sup>72</sup> Findagrave #10290818.

<sup>73</sup> Perry/Graham marriage: Michigan, Jackson County records 1822-1940, <https://familysearch.org/ark:/61903/1:1:VN2L-V2N>; FHL Film 941632.

<sup>74</sup> Findagrave #10290798; wife Mary Jane #10290092.

<sup>75</sup> **Carr/Tunncliff Tree.**

<sup>76</sup> Andrew J. Graham, U. S. Civil War Registrations Records, 1 Jul 1863, married, residence: Jackson, Michigan; online at Ancestry (accessed 16 Jan 2020).

<sup>77</sup> Findagrave #10290086.

<sup>78</sup> 1850 U. S. Census of East Cleveland, Cuyahoga, Ohio, *FamilySearch*, <https://familysearch.org/ark:/61903/3:1:S3HY-63RS-W7>; Samuel (age 59, b. MA) and Esther (age 52, b.

at Glastonbury, Hartford, Connecticut **Esther Loveland** dau of Levi and Esther (Hills) Loveland.<sup>80</sup> She was baptized<sup>81</sup> 20 Jul 1788(? , should be 1798) at Eastbury Parish, Glastonbury, Hartford, Connecticut and died at before 1880 at East Cleveland, Cuyahoga, Ohio.<sup>82,83</sup>

Samuel and Esther (Loveland) Graham had seven children.<sup>84</sup>

16 i. **JOHN GRAHAM** was born 1817 at Ohio.

17 ii. **REBECCA GRAHAM** was born 1818 at Ohio and died after 1880. She married<sup>85</sup> 3 Mar 1836 at Cuyahoga County, Ohio **Theron Luther Woodworth** as his 2<sup>nd</sup> wife. Theron was son of Luther Woodworth (age 74, born Connecticut); he was born 1805 at New York and

---

CT) were farmers at house number 2718. Considering the wealth of references to Grahams and Lovelands in the time period, it is not certain which of them refer to our couple; the author has chosen to place the 1850 census record as most reliable and has used it to calculate birthyears.

<sup>79</sup> There is a Samuel Graham buried in Cleveland, Woodland Cemetery (Find A Grave #102505281) , but this is not the right one! *cf.* the 1860 and 1870 U. S. Censuses below.

<sup>80</sup> U. S. and International Marriage Records, 1560-1900; Esther Loveland (b. 1778) spouse of Samuel Graham. Why no marriage date? —and strange birthyear?

In the same vein: U. S. Civil War Pension Index: Esther A. Graham, widow of Samuel Graham, E. 182 Ohio Infantry, dated 1886 Apr 17; Samuel—veteran of Civil War (he would have been 70 yrs.?).

Also, there is an oft-cited 1810 census record (Roll 1, p. 446, FHL Film 281229) 'Esther Loveland' —lots of kids, but this is undoubtedly Esther (*Seward*) Loveland of Wethersfield (b. 1760, d. 1824), widow of John Loveland (d. 1809); she also appears in the 1820 U. S. Census and has a will probated 4 Oct 1824.

<sup>81</sup> Connecticut, Church Record Abstracts, 1630-1920, p. 221 (Vol 2, p. 30), 'Esther, d. Levi & Esther'; online at Ancestry (accessed 16 Mar 2020).

<sup>82</sup> 1860 U. S. Census of East Cleveland, Cuyahoga, Ohio, Page 754, FHL Film 803955, Dwelling 417, Family 410, Saml (age 68) and 'Mary' (age 60) are living with son Solomon, wife Mary and their two sons; online at Ancestry (accessed 15 Mar 2020).

<sup>83</sup> 1870 U. S. Census of East Cleveland, Cuyahoga, Ohio, Roll M593\_1192, Page 316B, FHL Film 552691, 'Mary' (age 70, Saml has probably died) are living with son 'Sullivan' (Solomon), wife Mary and their two sons, ages 14 and 16, in the 1880 Census, Solomon is a widower and is alone; online at Ancestry (accessed 15 Mar 2020).

<sup>84</sup> 1850 U. S. Census of East Cleveland, Cuyahoga, Ohio, *FamilySearch*, <https://familysearch.org/ark:/61903/3:1:S3HY-63RS-W7> ; Samuel and Esther were farmers at house number 2718, with four of their youngest children, Benjamin, L. E. (female), Sarah, and Emeline. The two oldest sons, John and Solomon, were living next door (no. 2717) with their sister Rebecca (Graham) Woodworth, her husband Theron, her father-in-law Luther (age 74) and three children Julia, Mary, and Laura Woodworth.

<sup>85</sup> Woodworth/Graham marriage: Ohio, Cuyahoga County Marriages, *FamilySearch*, <https://familysearch.org/ark:/61903/1:1:X8KY-6YP> FHL Film 872466.

died 1874 at East Cleveland, Cuyahoga, Ohio; buried<sup>86</sup> at East Cleveland Township Cemetery, Cuyahoga, Ohio. He had married<sup>87</sup> (1) 5 Feb 1830 at Cuyahoga County, Ohio **Cordelia L. Joslyn**. Four children: Julia, b. 1840, Mary b. 1843, Laura b. 1849, and Olin b. 1856.<sup>88,89</sup>

18 iii. **SOLOMON GRAHAM** was born abt 1821 at Ohio and died 5 Nov 1892 (age 72-73) at Cleveland, Cuyahoga, Ohio; buried<sup>90</sup> at East Cleveland Township Cemetery. He married<sup>91</sup> 25 Nov 1852 at Cuyahoga County, Ohio **Mary A. Cummings**.<sup>92</sup> She was born 1825 at Massachusetts and died before 1880 at Ohio. Two children: Charles b. 1854 and Samuel b. 1856.

19 iv. **BENJAMIN GRAHAM** was born 1825 at Ohio and died 29 Jan 1896 (age 70-71) at Thompson, Geauga, Ohio; buried<sup>93</sup> at Maple Grove Cemetery, Thompson, Geauga, Ohio. He married<sup>94</sup> 10 Apr 1849 at Lake County, Ohio **Emeline Warner**. Four children: Sarah b. 1851, Myron T. b. 1853, Elsie J. b. 1855, Myrtie b. 1860.<sup>95</sup>

20 v. **EMELINE GRAHAM** was born 1826 at Ohio.

21 vi. **L. E. GRAHAM** (female) was born 1830 at Ohio.

22 vii. **SARAH GRAHAM** was born 1832 at Ohio.

---

<sup>86</sup> Findagrave #135439333.

<sup>87</sup> Woodworth/Joslyn marriage: Ohio, Cuyahoga County Marriages, *FamilySearch*, <https://familysearch.org/ark:/61903/1:1:X886-K4M> FHL Film 872466.

<sup>88</sup> 1860 U. S. Census of East Cleveland, Cuyahoga, Ohio, Roll M653\_955, Page 752, FHL Film 803955; online at Ancestry (accessed 15 Jan 2020).

<sup>89</sup> Online at [www.ancestry.com/family-tree/person/61691406](http://www.ancestry.com/family-tree/person/61691406) 'Nelson Family Tree' owner: treeclimber220486; (accessed 15 Jan 2020).

<sup>90</sup> Findagrave #171509887.

<sup>91</sup> Graham/Cummings marriage: Ohio, Cuyahoga County records 1789-2013, <https://familysearch.org/ark:/61903/1:1:XZGG-JXP>; FHL Film 872468.

<sup>92</sup> 1860 U. S. Census of East Cleveland, Cuyahoga, Ohio, *FamilySearch* <https://familysearch.org/ark:/61903/1:1:MCGD-W24>; FHL Film 803955.

<sup>93</sup> Findagrave #42385143.

<sup>94</sup> Graham/Warner marriage: Ohio, Cuyahoga County Marriages, *FamilySearch*, <https://familysearch.org/ark:/61903/1:1:XDPN-W77>; FHL Film 973915.

<sup>95</sup> 1860 U. S. Census of Thompson, Geauga, Ohio, Roll M653\_967, Page 631, FHL Film 803967; online at Ancestry (accessed 15 Jan 2020).

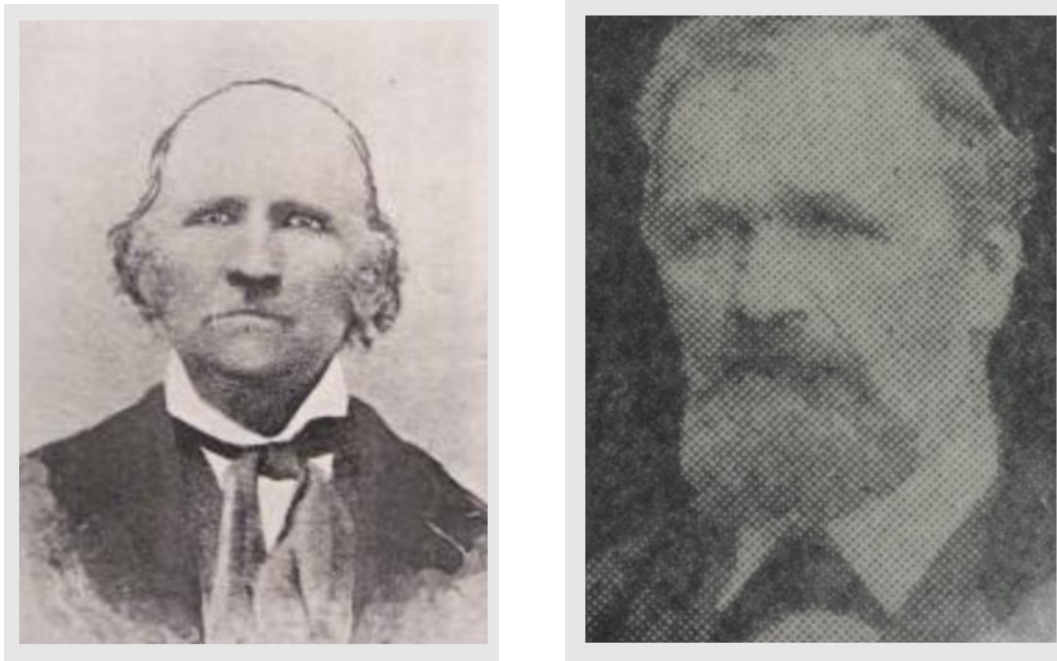


Figure 4. Chauncey Loveland abt 1860 and his son Chester Carlos Loveland abt 1850<sup>96</sup>

6. **Nancy Graham (Samuel<sup>5</sup> John<sup>4</sup> Samuel<sup>3</sup> Benjamin<sup>2</sup> Henry<sup>1</sup>)** was born 1797 at Madison (Ohio)<sup>97</sup> and died at Carthage, Hancock, Illinois on 20 Sep 1845. Nancy married<sup>98</sup> **Chauncey Loveland** 15 Dec 1814 at Madison, then Geauga County, Ohio.

He was born 1 Oct 1795 at Glastonbury,<sup>99</sup> Hartford, Connecticut son of Levi and Esther (Hill) Loveland. He died 6 Aug 1876 at Bountiful, Davis, Utah. He married (2) spring 1846 at Mt. Pisgah, Iowa **Sally Horn Crockett**; she was born 1799 and then (3) 1857 at Utah **Elvira Jones Thomas**; she was born 1808 and died 1876.<sup>100</sup>

---

<sup>96</sup> 'Pioneer Database', online at [history.churchofjesuschrist.org/overlandtravel/pioneers/424/chauncey-loveland](http://history.churchofjesuschrist.org/overlandtravel/pioneers/424/chauncey-loveland) and [/6366/chester-loveland](http://history.churchofjesuschrist.org/overlandtravel/pioneers/6366/chester-loveland) and sources cited therein.

<sup>97</sup> No real source—listed by FamilySearch as 1 Aug 1797, Madison, Geauga, Ohio.

<sup>98</sup> Loveland/Graham marriage: Ohio, Geauga County marriages, 1789-2013; *FamilySearch* <https://familysearch.org/ark:/61903/1:1:Q21Q-26JQ>; FHL Film 873461, Franklin County Genealogical & Historical Society.

<sup>99</sup> **Life Sketch of Chauncey Loveland**; birthplace is stated to be Glasgow, Connecticut; the author can find no town by that name. Other sources say Glastonbury—which makes sense as it is the larger city across the Connecticut River from Wethersfield, the known first settlement of the Loveland family and the first settlement in Connecticut.

<sup>100</sup> **Life Sketch of Chauncey Loveland**.

Chauncey and Nancy (Graham) Loveland had seven children all born in Ohio.<sup>101,102,103</sup>

23 i. **LEVI LOVELAND** was born 20 Feb 1816 at Ohio and died 31 Jul 1846 at Council Bluffs, Pottawattamie, Iowa. He married<sup>104</sup> 1 Feb 1836 at Geauga County, Ohio **Hannah Pierce/Pease**. Two children.

24 ii. **CHESTER CARLOS<sup>105</sup> LOVELAND** was born 30 Dec 1817 at Ohio and died 5 Mar 1886 at Calls Fort, Box Elder, Utah Territory.<sup>106</sup> He married six wives (1) **Fanny Call** m. 13 Feb 1838, (2) **Rosannah Elvira Winters** m. 15 Jan 1846, (3) **Celia Leanora Simmons** m. 21 Jan 1854, (4) **Elizabeth White** m. 16 Dec 1861, (5) **Rosetta Adaline Snow** m. 17 Nov 1866, (6) **Louisa Faulkner** m. 5 Sep 1868.<sup>107</sup>

25 iii. **SOPHIA LOVELAND** was born 1819 at Ohio and died 1840. She married<sup>108</sup> 14 Jun 1838 at Lorain County, Ohio **Charles W. Weaver**.

26 iv. **ALMOND FRANCIS LOVELAND** was born 1821 at Ohio and died 1841 at Carthage, Hancock, Illinois.<sup>109</sup> He married **Polly Graham**.<sup>110</sup>

---

<sup>101</sup> Loveland and Loveland, Vol. III, p. 199.

<sup>102</sup> FamilySearch Family Tree online.

<sup>103</sup> Life Sketch of Chauncey Loveland.

<sup>104</sup> Loveland/Pierce marriage: *FamilySearch* <https://familysearch.org/ark:/61903/1:1:XD2K-MYD> and <https://familysearch.org/ark:/61903/1:1:X862-9YK>.

<sup>105</sup> 'Pioneer Database', online at [www.history.churchofjesuschrist.org/overlandtravel/pioneers/6366/chester-loveland](http://www.history.churchofjesuschrist.org/overlandtravel/pioneers/6366/chester-loveland) and sources cited therein; there are many corruptions of the name 'Carlos'.

<sup>106</sup> Chester was a colorful individual with an aggressive character at 6' 2" and 240 pounds. He was a captain in the Nauvoo Legion and later a colonel (Utah). He served on a jury in Hancock County, Illinois with 11 mobocratic other jurors; the accused were some 'wrongly accused brethren.' He held the jury 36 hours until they were nearly starved—the vote was 11 guilty, 1 not guilty and they encouraged him to sign the guilty verdict. He said 'No, gentlemen, before I sign that paper I will die in this room and red ants will carry me out through the key hole.' He was a colonist and Stake President in the Carson Valley settlement in Nevada (then Utah). Later he was the first mayor of Brigham City, Utah. He had many close encounters with death including being asked by Brigham Young to troubleshoot Indian raiding of Utah emigrants on the Platte River. Indians stole teams on the Sweet Water which were recovered by Loveland after a hard struggle (recounted in **Loveland and Loveland III**, p. 202-204).

<sup>107</sup> FamilySearch Family Tree.

<sup>108</sup> Weaver/Loveland marriage: online at *FamilySearch*, Ohio Marriages, 1800-1958 <https://familysearch.org/ark:/61903/1:1:XDJD-T47>.

- 27 v. **GEORGE LOVELAND** was born 1823 at Ohio and died 1826 at Ohio.
- 28 vi. **HANNAH SOPHIA LOVELAND** was born 28 May 1827 at Ohio and died Apr 1867 at Bountiful, Davis, Utah Territory. She married 1846 in Hancock County, Illinois **Seth Dustin**. He was born 21 Oct 1825 at New York. Nine children.<sup>111</sup>
- 29 vii. **JOEL CHAUNCEY LOVELAND** was born 5 Aug 1835 at Ohio and died 8 Sep 1907 at Fish Haven, Bear Lake, Idaho. He married 13 Dec 1857 at Salt Lake City, Salt Lake, Utah Territory **Amanda Simmons**.<sup>112,113</sup> She was born 25 Jan 1838 at Leeds County, Johnstown District, Upper Canada. Nine children.
7. **Solomon Graham (Samuel<sup>5</sup> John<sup>4</sup> Samuel<sup>3</sup> Benjamin<sup>2</sup> Henry<sup>1</sup>)** was born abt 1798 at Geauga County, Ohio and died after 1869.<sup>114,115</sup> He married<sup>116</sup> 29 Mar 1821 at Geauga County, Ohio **Aurilla Beebe** dau of Ezra and Mary (Jenks) Beebe. She was born 1803 and died 1838 at Ohio.

Solomon and Aurilla (Beebe) Graham had at least three sons.

- 30 i. **GEORGE WASHINGTON GRAHAM** was born 1822 at Ohio and died 6 May 1882 at Perry County, Michigan, buried<sup>117</sup> at the Perry Cemetery, Charlotte, Eaton, Michigan. He

---

<sup>109</sup> 'Research Log for Almond Francis Loveland', BYU Center for Family History and Genealogy.pdf, 28 Jun 2019; found nothing except 1840 census record.

<sup>110</sup> 'Research Log for Polly Graham', BYU Center for Family History and Genealogy.pdf, 28 Jun 2019; found nil.

<sup>111</sup> **Loveland and Loveland, Vol. III, #299 p. 217.**

<sup>112</sup> 'Life History of Joel C. Loveland', online at *FamilySearch/Memory*, filename: jcloveland-001.pdf, written by a grandchild.

<sup>113</sup> **Loveland and Loveland, Vol. III, #300 p. 217-218.**

<sup>114</sup> 1830 U. S. Census of Levo, Geauga, Ohio, Roll M19\_31, Page 219, FHL 337,942, household of 8: Solomon/Aurilla, 2 boys 5-9, 2 girls under 5, and 2 grandparents; online at Ancestry (14 Mar 2020).

<sup>115</sup> Ohio Tax Lists, 1867 and 1869, Cleveland, East Side, Cuyahoga, Ohio, Vol 105; online at Ancestry (14 Mar 2020).

<sup>116</sup> Graham/Beebe marriage: Ohio, County Marriages, *FamilySearch* <https://familysearch.org/ark:/61903/1:1:XD2V-GYM>.

<sup>117</sup> Findagrave #120645725.

married 24 Aug 1845 at Parma, Jackson, Michigan **Lucinda Wood**. She was born 6 Jul 1828 at New York and died 17 Oct 1865 at Michigan.<sup>118</sup> Ten children.

31 ii. **JOEL GRAHAM** was born 1824 at Ohio; he was not married in 1860.<sup>119</sup>

32 iii. **OLIVER GRAHAM** was born 24 Aug 1829 at New York<sup>120</sup> and died 26 Apr 1921 (age 91) at Michigan; buried<sup>121</sup> at Siple Cemetery, Koylton Twp, Tuscola, Michigan. He married abt 1850 **Elnora Wilsie**.<sup>122</sup> She was born 22 Feb 1836 at Canada and died 18 Jun 1914; buried<sup>123</sup> next to her husband. Six children.

---

<sup>118</sup> 1860 U. S. Census of Brookfield, Eaton, Michigan, Roll M653\_532, Page 582, FHL 803542, living w/husband and 7 children as well as Geo's brother Joel, age 36, single; note that Estille cousins are only a few doors away ; online at Ancestry (31 Mar 2020).

<sup>119</sup> *Ibid.*

<sup>120</sup> 1850 U. S. Census of Parma, Jackson, Michigan, Roll 352, Page 271A, 17 yrs., living w/Geo and Lucinda and family; online at Ancestry (31 Mar 2020).

<sup>121</sup> Findagrave #47974412.

<sup>122</sup> Graham/Wiltsie marriage: listed as parents on son Ambrose E. Graham's marriage: Ontario, Canada marriages, 1826-1937; online at Ancestry (31 Mar 2020).

<sup>123</sup> Findagrave #47974410.