

The Anson — Sands Connection of Delaware County New York

Part I: Descendants of Jesse and Maria (Sands) Anson

By Maralyn D. Tolman and Richard L. Tolman, Ph. D.

This essay describes the family life, origins and two generations of descendants of *Jesse Anson and Maria L. Sands* of Delaware County, New York. Both of these individuals came from American colonial families and had the misfortune (from a genealogical point of view) of being raised in one of the most difficult time periods for New York county records. For this reason there exists much speculative and incorrect published information about the couple, their contemporary relatives and their origins. It is our purpose to provide documentation for that which is actually known.

Part I describes the descendants (three generations) of Jesse and Maria (Sands) Anson; Part II and Part III describe the ancestry of Jesse Anson and then Maria Sands, respectively.

Generation One

1. **Jesse Anson** was born of 'an old New England family' 2 Jun 1820 in Delaware County, New York, the son of Job and Charlotte (Holmes) Anson;¹ died 11 Mar 1894 at Stevens Point, Portage, Wisconsin from a hemorrhage of the brain caused by a fall on the sidewalk.^{2,3} He was orphaned at age 14 (abt 1834) with both parents dying within a month of one another; he was one of three brothers and eight sisters.⁴ He moved west to Belvidere, Illinois in 1838 and then

¹ See 'Origins of Jesse Anson' below.

² Obituary: *Stevens Point Weekly Journal*, March 17, 1894, p. 1, Wisconsin State Historical Society, Madison Film P77-256.

³ Obituary: *Steven's Point Gazette*, March 14, 1894, p. 1, Wisconsin State Historical Society, Madison Film P78-577.

⁴ 'Pioneer Profile: Jesse Anson and Wife Maria Sands', *Pedigree Pointers*, Vol. 4, no. 1, Oct. 1981 (organ of the Stevens Point (Wisconsin) Genealogical Society), p. 10 [New York Public Library]; their source of information is obscure, but much of the information is in the *Steven's Point Gazette* obit *vide supra* as well as son Leonard's biography (*cf.* E. B. Usher, ref 44).

three years later north to Grand Rapids, Wisconsin.⁵ He worked winters as a woodsman and otherwise on the river being a seasonal river pilot. Jesse fought in the Civil War in the 5th Wisconsin Infantry Regiment (1861-1864);⁶ he was wounded 5 May 1862 at Williamsburg, VA and fought at Gettysburg, but the 5th Wisconsin only arrived on the third and last day of the battle.⁷ His wife Maria filed for his pension 4 Apr 1894⁸ shortly after his death.



Figure 1. Maria Sands Anson (1892) from the 'Old Settler's Club Picnic' in Goc, Michael J. *Land and Lumber: A History of Portage County* (Friendship, WI: New Past Press, 1999), 84.

He married⁹ **Maria L. Sands**¹⁰ 29 Aug 1844 at Belvidere, Boone, Illinois; she was born at Tompkins Township, Delaware, New York and died 9 Feb 1910 at Belvidere, Boone, Illinois and is buried next to her husband in the Forest Cemetery, Stevens Point, Portage, Wisconsin. She was the daughter of Obadiah and Mary (Orr) Sands of Delaware County, New York. She moved from Delaware County with her family in 1836 to settle in Belvidere, Boone County, Illinois.¹¹ She met and married Jesse there in 1844.¹² In the 1880 U. S. Census Jesse's father was indicated to have been born in Connecticut, his mother in New York; Maria's parents were both

⁵ Jesse Anson Obituary: *Steven's Point Gazette*, March 14, 1894, p. 1, Wisconsin State Historical Society, Madison Film P78-577.

⁶ American Civil War Soldiers [database-on-line] Ancestry.com; enlisted as Private in Company E, 5th Infantry Regiment Wisconsin on 26 Jul 1861, mustered out 30 Jul 1864.

⁷ American Civil War Research Database, Alexander Street Press LLC, on-line at FHL (accessed 20 Mar 2013).

⁸ U. S. Civil War Pension Index; General Index to Pension Files 1861-1934, National Archives and Records Administration database, Roll T288_10, on-line at Ancestry.com.

⁹ Steenrod, Robert L. *Boone County Marriage Records 1836-1860* (S. l.: s. n. 1960), entry 169.

¹⁰ Her middle initial 'L.' probably stands for Louise as her daughter Mary Julia gave this name to her daughter and there is no other family source of the name.

¹¹ *Illinois: Portrait and Biographical Record of Winnebago and Boone Counties, Illinois* (Chicago: Biographical Publ. Co., 1892), p. 600.

¹² 'Mrs. Jesse Sands' Obituary: *Stevens Point Gazette*, February 16, 1910 [Wisconsin State Historical Society, Madison, WI]; names all the children except Perry, who predeceased her.

reportedly born in New York.¹³

Jesse and Maria were among the first settlers of Steven's Point; Maria was the second white woman to arrive at Steven's Point.¹⁴ The Portage County Historical Society has an interesting account¹⁵ of Maria Anson's journey in 1845 (at age 20) with a Mr. H. Stow and a Mr. J. Q. A. Rollins (her husband had taken some cattle to the pinery for logging purposes) from 'Bogus' Prairie (Bonus Prairie, Illinois) to Portage (Wisconsin) and then Pointe Basse (now Nekoosa) under very harsh physical conditions. They raised their family in Portage County, Wisconsin, but moved from Wisconsin to Blackfoot, Idaho in 1885 and then back to Wisconsin in 1891. His sons Perry and Daniel lived in Blackfoot at the time; he had charge of a toll bridge over the Snake River at \$75/month w/house and fuel included. After Jesse's death in 1894, Maria stayed frequently with her daughter Mary J. Rowell in Minneapolis and with her sister Betsey (Sands) Sands in Belvidere, Boone, Illinois until Betsey's death.^{16,17}

Jesse and Maria (Sands) Anson had four children:^{18,19}

- + 2 i. **MARY JULIA ANSON** born 2 Jun 1845 at Conant Rapids, Portage, Wisconsin; died 21 Feb 1921 at Hennepin County, Minnesota.
- + 3 ii. **LEONARD NILES ANSON** born 3 Jul 1848 at Conant Rapids, Portage, Wisconsin; died 24 May 1927 at Miami, Dade, Florida and buried at Stevens Point, Portage, Wisconsin.
- + 4 iii. **PERRY JESSE ANSON** born 9 Jan 1851 at Plover, Portage, Wisconsin; died 21 Aug 1907 at Salt Lake City, Salt Lake, Utah. He is buried at the Salt Lake City cemetery.
- 5 iv. **GEORGE DANIEL ANSON**, born Apr 1858 at Plover, Portage, Wisconsin and died after 1920²⁰ and is probably buried²¹ in the Gavilan Hills Memorial Park in Gilroy,

¹³ 1880 U. S. Census of Plover, Portage, Wisconsin, National Archives Roll: 1442, Enumeration Dist. 142, p. 108C, Family 234.

¹⁴ *Stevens Point Gazette*, February 16, 1910 [Wisconsin State Historical Society, Madison, WI].

¹⁵ 'The Wakeley and other Early Settlers of the Wisconsin River Valley', The Portage County Historical Society, online at www.pchswi.org/archives/bios (accessed 18 May 2014).

¹⁶ 1900 U. S. Census of Belvidere, Boone, Illinois, National Archives Roll T623_237, Enumeration Dist. 4, p. 16B, Family 426; children: Maria 4 of 4 alive, Betsey 3 of 7 alive.

¹⁷ Obituary: *Stevens Point Journal*, February 12, 1910 on-line at Ancestry.com (accessed 15 Mar 2009).

¹⁸ 1860 U. S. Census of Plover, Portage, Wisconsin, National Archives Roll: M653_1426, p. 308, Family 1104.

¹⁹ See 'Anson' at P (Mersiovsky) Bardo/rootsweb [wc.rootsweb.ancestry.com/cgi-bin/igm.cgi?op=SRCH&db=pbardo&surname=A] (accessed 18 Apr 2013).

Santa Clara, California. He is 'Dan' in most records. He most likely never married.²² At his father's death²³ in 1894, he was stated to be 'in the south (Arkansas)'.²⁴ He lived his later years in California²⁵ working as a cook.²⁶

Generation Two

2. Mary Julia (Jesse¹) Anson was born 2 Jun 1845 at Conant Rapids, Portage, Wisconsin and died 21 Feb 1921 at Hennepin County, Minnesota.²⁷ She married²⁸ (1) 30 Jul 1864 at Minneapolis, Hennepin, Minnesota **Octave David Precourt** of Canada East (Quebec); they were divorced before 1875. He was born abt 1838 and died 11 May 1884 at Minneapolis, Hennepin, Minnesota. He married²⁹ (2) 2 Oct 1875 at Stillwater, Washington, Minnesota **Sophia Bennechie**; it was her second marriage also. The Anson family and the Antoine Precourts were

²⁰ 'George D. Anson, cook, b. New York?', 1920 U. S. Census of Saratoga, Santa Clara, California, National Archives Roll T625_126, Enumeration Dist. 212, p. 2B.

²¹ www.findagrave.com/cgi-bin?...memorial#88906552.

²² He is listed as a widower in the 1900 U. S. Census of Minneapolis Ward 4, Hennepin, Minnesota, National Archives Roll 767, Enumeration Dist. 0046, p. 7B, Family 82, but is listed as single in all earlier and later censuses. An exhaustive search has failed to uncover a marriage record.

²³ Jesse Anson Obituary: *Steven's Point Gazette*, March 14, 1894, p. 1, Wisconsin State Historical Society, Madison Film P78-577.

²⁴ Obituary: *Stevens Point Weekly Journal*, March 17, 1894, p. 1, Wisconsin State Historical Society, Madison Film P77-256.

²⁵ 'Mrs. Jesse Sands' Obituary: *Stevens Point Gazette*, February 16, 1910, Wisconsin State Historical Society, Madison Film 81-1283.

²⁶ 1895 Minnesota State Census of Minneapolis Ward 4, Hennepin, Minnesota, Roll 290_65, Line 27; on-line at Ancestry.com.

²⁷ 1860 U. S. Census of Plover, Portage, Wisconsin, National Archives Roll: M653_1426, p. 308, Family 1104.

²⁸ 'Russell, Tubbs, Gomoll, and Dahnke Family Trees', owner: ShawnWRussell, trees.ancestry.com/tree/30889 (accessed 13 Mar 2012; no longer available 2014); a primary source for the Precourt/Anson marriage has not been discovered and there are several unsourced family trees and family group sheet that have a Mary Julia w/different surname married to Octave Precourt; in support of Mary Julia Anson as Octave Precourt's wife—the 1880 U. S. Census has Julia Precourt (gdau) living w/her parents Jesse and Maria Anson, cf ref 37.

²⁹ 'Octavus Precourt', Minnesota Marriage Index 1849-1950, on-line at Ancestry.com (accessed 18 Mar 2012).

neighbors in 1850 in Plover.³⁰ It is probable that Octave Precourt (Mary Julia's first husband) was a nephew of Antoine and they came from the same area of Canada East (Quebec).

Mary married³¹ (2) 28 Sep 1875 at Minneapolis, Hennepin, Minnesota **Jacob Hastings Rowell**. He was born 1851 and died before 1900.^{32,33}

Octave and Julia Mary (Anson) Precourt had three children:^{34,35}

6 i. **JULIA MARY PRECOURT** was born Apr 1865 at Wisconsin^{36,37} and died 8 Jan 1905 at Minneapolis, Hennepin, Minnesota.^{38,39} She married⁴⁰ 8 Apr 1889 at St. Croix County, Wisconsin **Charles August Duby** born abt 1848 of New York and son of Thomas and Mary (Staff) Duby; he may have died before 1900.⁴¹ They had two daughters.

7 ii. **unknown PRECOURT**, probably died young.

³⁰ 1850 U. S. Census of Plover, Portage, Wisconsin, National Archives Roll: M432_1004, p. 4, Families 44 and 46.

³¹ 'Mary Julia Precourt', Minnesota Marriage Index 1849-1950, on-line at Ancestry.com (accessed 18 Mar 2012).

³² 1875 Minnesota State Census of Minneapolis Ward 5, Roll MNSC_8, database-on-line at Ancestry.com (accessed 24 Apr 2013).

³³ 1900 U. S. Census of Minneapolis Ward 4, Hennepin, Minnesota, National Archives Roll 767, Enumeration Dist. 0046, p. 7B, Family 82; Mary Rowell: 2 of 3 children alive.

³⁴ 1880 U. S. Census of Farmington, Polk, Wisconsin, National Archives Roll 1442, Enumeration Dist. 207, p. 359A, Family 167.

³⁵ 1900 U. S. Census of Minneapolis Ward 4, Hennepin, Minnesota, National Archives Roll 767, Enumeration Dist. 0046, p. 7B, Family 82; Mary Rowell: 2 of 3 children alive.

³⁶ 1870 U. S. Census of Stockton, Portage, Wisconsin, National Archives M593_1732, p. 190B, Family 142.

³⁷ 1880 U. S. Census of Plover, Portage, Wisconsin, National Archives Roll 1442, Enumeration Dist. 142, p. 108C, Family 234; 'gdau Julia Precourt' living with Jesse & Maria Anson.

³⁸ 1900 U. S. Census of Minneapolis Ward 8, Hennepin, Minnesota, National Archives Roll T623_769, Enumeration Dist. 91, p. 7B, Family 159; 'Julia M. Daby'.

³⁹ www.findagrave.com/cgi-bin...memorial#100910796; Lakewood Cemetery, Minneapolis (accessed 29 May 2013).

⁴⁰ Duby/Precourt marriage: Wisconsin Genealogical Research Service/WI Gen Index, Vol. 2, p. 186; online at www.wisconsinhistory.org (accessed 3 May 2013) and 'Wisconsin Marriages, 1836-1930' at FamilySearch online (accessed 29 May 2013).

⁴¹ Minnesota Territorial and State Censuses of Minneapolis Ward 4 of 1895 and 1905, The Generations Network, Inc., Minnesota Historical Society, 1977; online at Ancestry.com (accessed 7 Mar 2008).

8 iii. **IDA LOUISE PRECOURT**, born 28 May 1871 at Minnesota and christened⁴² 4 Apr 1881 at Washington County, Minnesota; died⁴³ 29 Jan 1960 at Hennepin County, Minnesota. She married^{44,45} 28 May 1885 at Hennepin County, Minnesota **Benjamin Gilbert**. He was born abt 1857 of Illinois and died⁴⁶ 13 Dec 1927 at Hennepin County, Minnesota. They had a daughter.⁴⁷

3. Leonard Niles (Jesse¹) Anson^{48,49,50} was born 3 Jul 1848 at Conant Rapids, Portage, Wisconsin and died⁵¹ 24 May 1927 at Miami, Dade, Florida; he is interred in the Forest Park cemetery in the Anson mausoleum (Stevens Point).⁵² He was a successful lumberman in the Wisconsin valley of Merrill, Wisconsin. He was mayor of Merrill in 1890-1891.⁵³

⁴² Louise Precourt christening: Minnesota, Births and Christenings, 1840-1980, online at FamilySearch (accessed 18 May 2014); father listed as Octave Precourt.

⁴³ 'Ida Louise Gilbert', Minnesota Death Index 1908-2002, database-on-line at Ancestry.com (accessed 1 Nov 2010).

⁴⁴ 'Ida L. Precourt', Minnesota Marriage Index 1849-1950, on-line at Ancestry.com (accessed 18 Mar 2012).

⁴⁵ Gilbert/Precourt marriage: Wisconsin Genealogical Research Service/WI Gen Index, Vol. 1, p. 481; online at www.wisconsinhistory.org (accessed 3 May 2013); this record has them married 4 Aug 1885 in St. Croix County, Wisconsin!

⁴⁶ 'Benjamin Gilbert', Minnesota Death Index 1908-2002, database-on-line at Ancestry.com (accessed 1 Nov 2010).

⁴⁷ 1900 U. S. Census of Minneapolis Ward 4, Hennepin, Minnesota, National Archives Roll T623_767, Enumeration Dist. 0046, p. 7B, Family 82.

⁴⁸ Biographical Sketch: Western historical co., Chicago, *History of Northern Wisconsin*, (Chicago, Illinois: Western historical company, 1881), p. 763 [Wisconsin Historical Society, Madison].

⁴⁹ Biographical Sketch: Usher, Ellis Baker History of Wisconsin, Vol. 5 (Wisconsin: Lewis Publishing Co., 1914), pp. 1256-1257, pic. [Wisconsin State Historical Society, Madison].

⁵⁰ Biographical Sketch: American Lumbermen, third series, part 1, Vol. 1 (Chicago, Illinois: The American Lumberman, 1906), pp. 148-152, pic [Wisconsin State Historical Society, Madison].

⁵¹ Obituary: *Green Bay Gazette*, May 27, 1927, *Wisconsin Necrology*, V. 24, pp. 236-7 [Wisconsin State Historical Society].

⁵² www.findagrave.com/cgi-bin...memorial#77322069; (accessed 1 May 2013); interred in the mausoleum are Leonard and Hanora and their two oldest children.

⁵³ *Merrill Daily Herald* (the Daily Herald Jubilee Edition of the City of Merrill, Wisconsin), October 1, 1934, unpaginated; online at ancestry.com (accessed 31 May 2013).

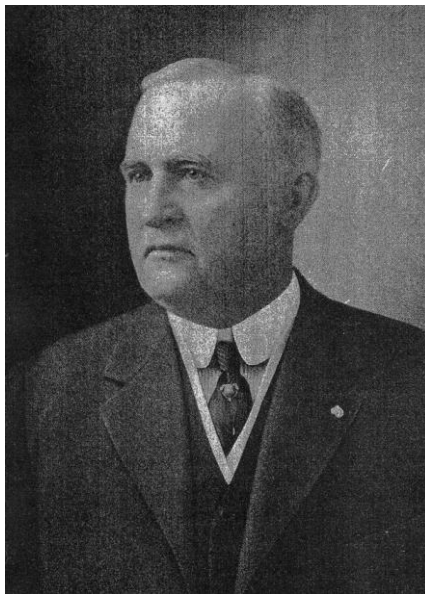


Figure 2. Leonard Niles Anson, 1848-1927

He married 29 Dec 1872 at Stevens Point, Portage, Wisconsin **Hanorah Ann Meehan**, daughter of John and Mary (Craig) Meehan⁵⁴. She was born in Mar 1845 at Quebec, Portneuf, Canada⁵⁵ and died⁵⁶ 28 Aug 1934 at Stevens Point, Portage, Wisconsin. She immigrated in 1853.⁵⁷

Leonard and Hanora (Meehan) Anson had three children:^{58,59}

- 9 i. **MAE TERESA ANSON**, born 1 Aug 1874 at Meehan's Mill, Portage, Wisconsin and died⁶⁰ 2 Mar 1942 at Hamilton, Butler, Ohio; she is buried at St. Stephens cemetery,

⁵⁴ Obituary of John Meehan: *Steven's Point Gazette*, November 18, 1885, WSHS Film P71-1975 [Wisconsin State Historical Society].

⁵⁵ 1851 Census of Ste Catherine, Portneuf County, Canada East (Quebec), Library and Archives of Canada, Ottawa, Roll C_1132, Sub-district 288, p. 31; online at Ancestry.com (accessed 9 May 2009).

⁵⁶ Obituary: *Wausau Daily Record*, August 28, 1934, *Wisconsin Necrology*, V. 34, p. 152 [Wisconsin State Historical Society] and *Steven's Point Daily Journal*, August 28, 1934, p. 6.

⁵⁷ 1900 U. S. Census of Merrill, Lincoln, Wisconsin, National Archives Roll T623_1796, Enumeration Dist. 62, p. 8B, Family 158; Hanora's parents born in Ireland; 2 of 3 children alive.

⁵⁸ 1905 Wisconsin State Census of Merrill, Lincoln, Wisconsin, database-on-line at Ancestry.com (accessed 8 May 2009).

⁵⁹ 1880 U. S. Census of Linwood, Portage, Wisconsin, National Archives Roll 1442, Enumeration Dist. 141, p. 94A, Family 53.

⁶⁰ Obituary: *Merrill Herald*, March 3, 1942, *Wisconsin Necrology*, V. 46, p. 140 [Wisconsin State Historical Society].

Stevens Point, Portage, Wisconsin. She married abt 1908 **(Judge) Francis Edmund Donoghue**.⁶¹ He was born⁶² 27 Nov 1873 of Illinois and died 8 Jan 1952 at Cook County, Illinois. They had two sons.⁶³

- 10 ii. **GEORGE MEEHAN ANSON**, born 3 Mar 1876 at Stevens Point, Portage, Wisconsin and died⁶⁴ 12 Mar 1940 at Miami, Dade, Florida; he is buried at St. Stephens cemetery, Stevens Point, Portage, Wisconsin. He was mayor of Merrill in 1906-7.⁶⁵ He was a lumberman like his father and co-owner of the Anson and Gilkey Company. Never married.⁶⁶
- 11 iii. **HENRY ANSON**,⁶⁷ born⁶⁸ 23 Jul 1878 at Linwood, Portage, Wisconsin and was deceased before 1880.^{69,70}

4. Perry Jesse (Jesse¹) Anson was born 9 Jan 1851⁷¹ at Plover, Portage, Wisconsin and died^{72,73,74} 21 Aug 1907 at Salt Lake City, Salt Lake, Utah; he is buried in the City cemetery in Salt

⁶¹ 1920 U. S. Census of Merrill Ward 5, Lincoln, Wisconsin, National Archives Roll T625_1993, Enumeration Dist. 112, p. 7A, Family 146.

⁶² World War I Draft Registration Cards 1917-1918, Lincoln County, Wisconsin, Roll 1674749; database-on-line at Generations Network (accessed 22 May 2009).

⁶³ 1930 U. S. Census of Miami, Dade, Florida, National Archives Roll 310, Enumeration Dist. 61, p. 17A, Family 61.

⁶⁴ Obituary: *Merrill Herald*, March 13, 1940, *Wisconsin Necrology*, V. 42, pp. 192-3 [Wisconsin State Historical Society].

⁶⁵ *Merrill Daily Herald* (the Daily Herald Jubilee Edition of the City of Merrill, Wisconsin), October 1, 1934, unpaginated; online at ancestry.com (accessed 31 May 2013).

⁶⁶ 1930 U. S. Census of Miami, Dade, Florida, National Archives Roll 310, Enumeration Dist. 61, p. 17A, Family 61.

⁶⁷ Western Historical Co., *History of Northern Wisconsin* (Western Historical Company: Chicago, 1881), p. 763.

⁶⁸ Wisconsin Births and Christenings 1826-1926, online at Familysearch.org (accessed 28 May 2013).

⁶⁹ 1880 U. S. Census of Linwood, Portage, Wisconsin, National Archives Roll 1442, Enumeration Dist. 141, p. 94A, Family 53.

⁷⁰ 1900 U. S. Census of Merrill, Lincoln, Wisconsin, National Archives Roll T623_1796, Enumeration Dist. 62, p. 8B, Family 158; Hanora's parents born in Ireland; 2 of 3 children alive.

⁷¹ Obituary: *Stevens Point Journal* (Wisconsin), August 31, 1907 online at Ancestry.com (accessed 15 Mar 2009); also has parentage and life summary.

⁷² *Salt Lake City (Utah) Directory*, 1908 (Woodridge, Connecticut: Research Publns, 1908), p. 135.

⁷³ Obituary, *Deseret News* (Salt Lake City, Utah) August 22, 1907, p. 5 (FHL Film 321,129).

Lake City. He married⁷⁵ 6 Jul 1872 at Salt Lake City, Salt Lake, Utah **Jennie/Jeannie Smith Lyon**, daughter of Thomas S. and Mary Ann (Higgins) Lyon.⁷⁶ She was born 29 Mar 1849 at Kilmarnock, Ayrshire, Scotland. She came to Utah at age 10 with her parents in 1859.⁷⁷ She died^{78,79} (diabetes) 4 May 1924 at Salt Lake City, Salt Lake, Utah and was buried⁸⁰ 6 May 1924 in the Salt Lake City cemetery.



Figure 3. Perry J. Anson, 1851-1907

⁷⁴ Utah Department of Health, Office of Vital Records and Statistics, File no. 1135, online at www.historyresearch.utah.gov/indexes/index.html (accessed 7 Oct 2011).

⁷⁵ P. J. Anson obituary: Salt Lake Tribune, August 23, 1907, p. 10, online at www.chroniclingamerica.loc.gov (accessed 9 May 2014).

⁷⁶ 1860 U. S. Census of Great Salt Lake City Ward 16, Utah Territory, National Archives, Roll M653_1313, p. 234, Family 9.

⁷⁷ Mormon Pioneer Overland Travel Database, online at www.history.lds.org/overlandtravels (accessed 18 May 2014).

⁷⁸ Obituary, *Deseret News* (Salt Lake City, Utah) May 5, 1924 (FHL Film 321129).

⁷⁹ Utah Department of Health, Office of Vital Records and Statistics, File no. 853, online at www.historyresearch.utah.gov/indexes/index.html (accessed 7 Oct 2011).

⁸⁰ Utah State Historical Society, Salt Lake City, Utah, Utah Cemetery Inventory, database-on-line at Ancestry.com (accessed 20 Apr 2010).

Perry and Jeannie (Lyon) Anson had six children all born at Salt Lake City, Salt Lake, Utah:⁸¹

- 12 i. **THOMAS LYON ANSON**, born 16 May 1873 and died (paralysis) 31 Dec 1878 at Salt Lake City, Salt Lake, Utah.⁸² No Issue.
- 13 ii. **GEORGE DANIEL ANSON**, born 14 Mar 1876⁸³ and died⁸⁴ (heart attack) 11 Jan 1911 at Salt Lake City, Salt Lake, Utah; he is buried in the Salt Lake City cemetery. He was a bookkeeper. He married⁸⁵ 16 Feb 1906 at Davis County, Utah **Elsie Annella Bean** daughter of Epaminondas and Ina Francella (Hunt) Bean.⁸⁶ She was born 27 Dec 1880 at Richfield, Sevier, Utah and died 12 Jul 1970; she married (1) 17 Apr 1901 at Richfield, Sevier, Utah **Henry Edward Taylor**.⁸⁷ She had a daughter by Henry and two children with George, one of whom died in infancy.
- 14 iii. **PERRY FRANCIS ANSON**, born 16 Feb 1878 and died⁸⁸ 1 Sep 1912 (liver cancer) at Salt Lake City, Salt Lake, Utah. He was a hotel manager. He married⁸⁹ 27 Mar 1905 at Beaver, Beaver, Utah **Cleopatra Jensen**. She was born abt 1881 in Denmark.⁹⁰
- 15 iv. **MARY ANN LYON ANSON**, born 10 Sep 1880 and died⁹¹ 21 Dec 1919 (incompetent mitral valve) at Salt Lake City, Salt Lake, Utah; she is buried in the Salt

⁸¹ 1900 U. S. Census of Salt Lake City Ward 4, Salt Lake, Utah, National Archives Roll 1684, Enumeration Dist. 0040, p. 9A, Family 171.

⁸² Utah State Archives and Records Service, Utah Death Registers, 1847-1966, on-line at Ancestry.com (accessed 5 May 2011).

⁸³ World War I Draft Registration Cards 1917-1918, database-on-line at Ancestry.com (accessed 5 May 2011).

⁸⁴ Obituary, *Deseret News* (Salt Lake City, Utah) January 15, 1936, p. 7 (FHL Film 321129) and Utah State Archives and Records Service, Utah Death Registers, 1847-1966, on-line at Ancestry.com (accessed 5 May 2011).

⁸⁵ Utah State Archives and Records Service, Salt Lake City, Utah, Utah Marriage Records 1887-1914, database-on-line at Ancestry.com (accessed 5 May 2011).

⁸⁶ 1900 U. S. Census of Richfield, Sevier, Utah, National Archives Roll T623_1686, Enumeration Dist. 135, p. 4A, Family 63.

⁸⁷ Search: Elsie Annella Bean at FamilySearch: Ancestry File 4.19 and FamilySearch: IGI 5.0 on-line (accessed 25 Jun 2008).

⁸⁸ Utah State Archives and Records Service, Utah Death Registers, 1847-1966, on-line at Ancestry.com (accessed 5 May 2011).

⁸⁹ Beaver County (Utah) County Clerk, Marriage certificates 1888-1937 (Salt Lake City, Utah: Genealogical Soc. Of Utah, 1966).

⁹⁰ 1910 U. S. Census of Keswick, Shasta, California, National Archives Roll T624_107, Enumeration Dist. 0086, p. 12B, Family 90.

Lake City cemetery. She married⁹² 28 Sep 1904 at Salt Lake City, Salt Lake, Utah **John Frederick Daynes II**⁹³ son of John Frederick Nicholas and Rebecca (Bushby) Daynes. He was born 7 Dec 1872 at Salt Lake City, Salt Lake, Utah and died 15 Jan 1955 at Salt Lake City, Salt Lake, Utah; he is buried in the Salt Lake City cemetery. He married (2) 14 Jul 1920 at Salt Lake City, Salt Lake, Utah **Mabel Pearl Anderson** daughter of Henry James and Elizabeth Ann (Pyper) Anderson. She was born 13 Nov 1883 at Salt Lake City, Salt Lake, Utah and died 29 Jul 1968;⁹⁴ buried in the Salt Lake City cemetery. Pearl had married (1) 25 Sep 1907 at Salt Lake City, Salt Lake, Utah **Alma O. Soderberg**; no issue. John Frederick Daynes had five children with Mary Ann and one more with Pearl.

- 16 v. **JAMES HIGGINS ANSON**, born 29 Oct 1883⁹⁵ and died 1 Apr 1937 (heart disease) at Salt Lake City, Salt Lake, Utah;⁹⁶ he is buried in the Salt Lake City cemetery. He married **Edaline O'Neill**. She was born 17 Jan 1894 of Montana⁹⁷ and died 15 Nov 1972 at Los Angeles, Los Angeles, California.⁹⁸ He and a partner, Alma B. Carstenson, founded a music house business in the 1890's called the Carstenson & Anson Company.⁹⁹ James and Edaline had four children.¹⁰⁰

⁹¹ Utah Death Certificates 1904-1956, File No. 2058, database-on-line at FamilySearch (accessed 15 Apr 2010).

⁹² Marriage certificate (Salt Lake County, Utah) in the possession of Mrs. Maralyn D. Tolman, Incline Village, NV 89451.

⁹³ 'John F. Daynes Succumbs at 82 in Salt Lake City' *Salt Lake Tribune*, January, 1955, p. ?; names wives and children.

⁹⁴ 'Mrs. Pearl Daynes Dies in S.L.' *Deseret News*, July 30, 1968, p. ?; names husbands, children, and step-children.

⁹⁵ World War I Draft Registration Cards, 1917-1918, database-on-line at Ancestry.com (accessed 5 May 2011).

⁹⁶ Utah State Archives and Records Service, Utah Death Registers, 1847-1966, on-line at Ancestry.com (accessed 5 May 2011).

⁹⁷ 1920 U. S. Census of Salt Lake City Ward 4, Salt Lake, Utah, National Archives Roll T625_1865, Enumeration Dist. 140, p. 4B, Family 97.

⁹⁸ Social Security Death Index, database-on-line at Ancestry.com (accessed 5 May 2011).

⁹⁹ Warrum, Noble *Utah Since Statehood; Historical and Biographical, Vol. III* (Chicago, Illinois: S. J. Clarke Pub. Co., 1919, p. 1047.

¹⁰⁰ 1930 U. S. Census of Salt Lake City, Salt Lake, Utah, National Archives Roll 2421, Enumeration Dist. 67, p. 11B, Family 240.

17 vi. **JESSIE MARIA ANSON**, born 9 Oct 1884 and died¹⁰¹ (of teething) 13 Jul 1885 at Salt Lake City, Salt Lake, Utah; she is buried in the Salt Lake City cemetery.

¹⁰¹ Utah State Historical Society, Salt Lake City, Utah, Utah Cemetery Inventory, database-on-line at Ancestry.com (accessed 20 Apr 2010).